



SHUTTER BUG

ACADEMY

“Free for Personal Use!”

MASKING IN ADOBE LIGHTROOM CLASSIC

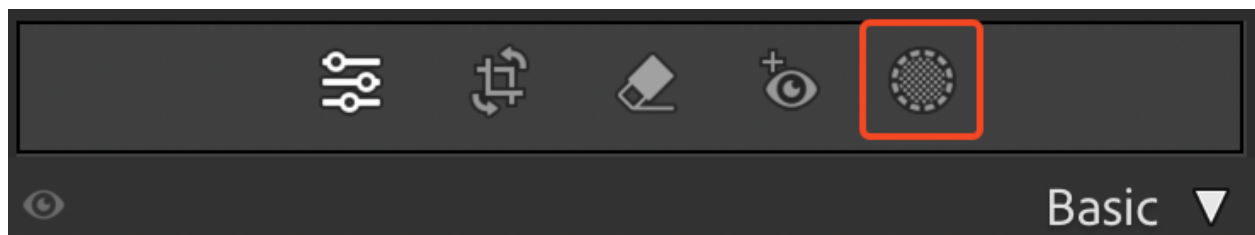
Here’s a detailed step-by-step guide on how to use masking inside **Adobe Lightroom Classic**. Once you review it, let me know if you’d like it formatted into a PDF.

MASKS: Black-Hides, and White-Reveals

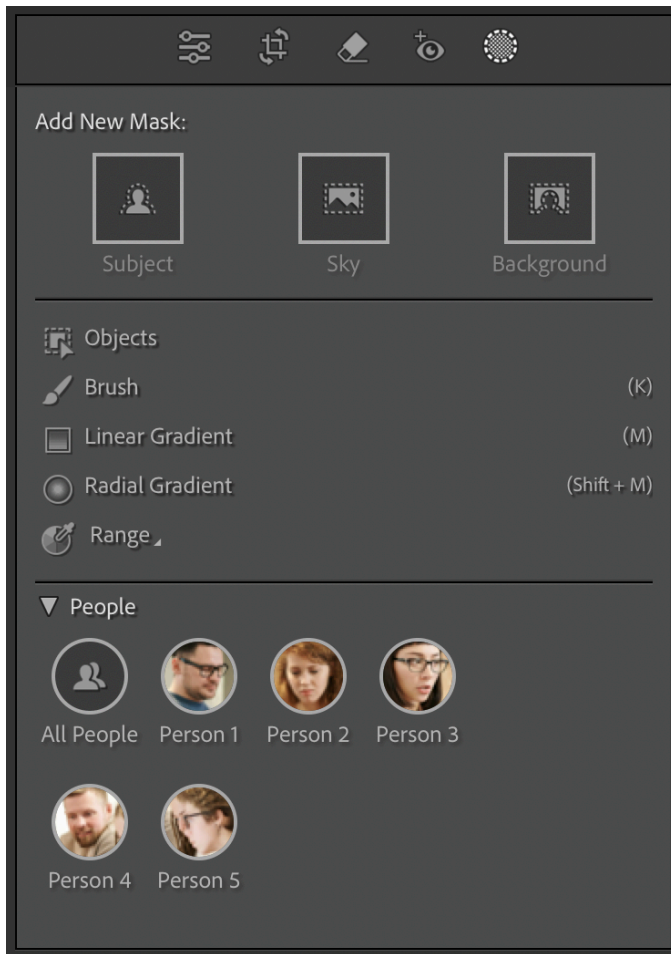
1. Open Your Image in Lightroom Classic

- Launch **Adobe Lightroom Classic** and open the **Develop Module** by clicking on the *Develop* tab at the top of the screen or pressing **D** on your keyboard.
- Select the image you want to edit from the filmstrip at the bottom.

2. Access the Masking Tools



- On the **right-hand panel**, locate the toolbar at the top of the adjustments section.
- Click on the **Masking icon** (a circle icon with a dotted outline). This opens the **Masking panel**, where you can create and manage masks.



3. Choose a Masking Type

Lightroom Classic provides various masking options. Select one based on your needs:

a. Brush

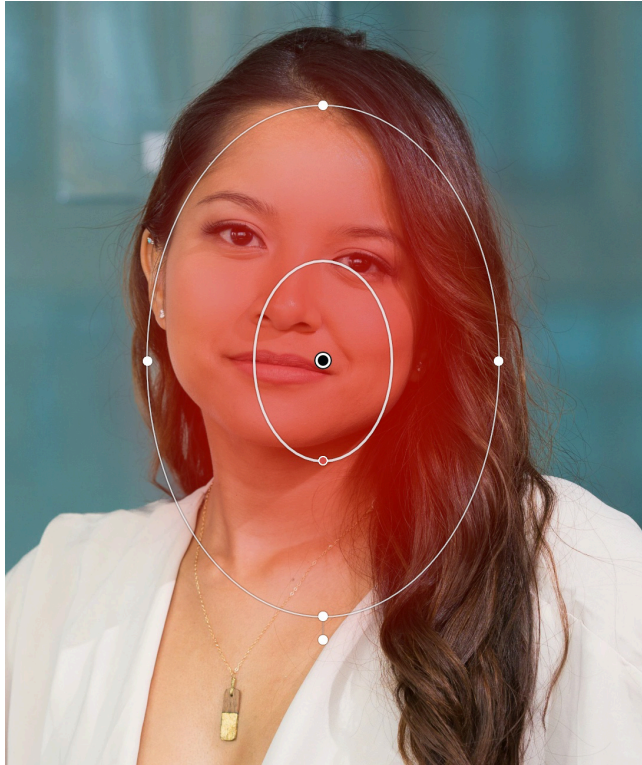
- Use this for freehand selections.
- Click on **Brush**.
- Adjust the size, feather, and flow in the **Brush settings**.
- Paint over the area you want to mask.

b. Linear Gradient



- Ideal for gradual adjustments across a part of the image.
- Click on **Linear Gradient**.

- Drag the gradient from the starting point to the desired direction on the image.
- Adjust the width and angle as needed.



c. Radial Gradient

- Best for circular or elliptical adjustments.
- Click on **Radial Gradient**.
- Drag to create an ellipse over the area.
- Adjust the size and shape as needed.

d. Select Subject-uses AI

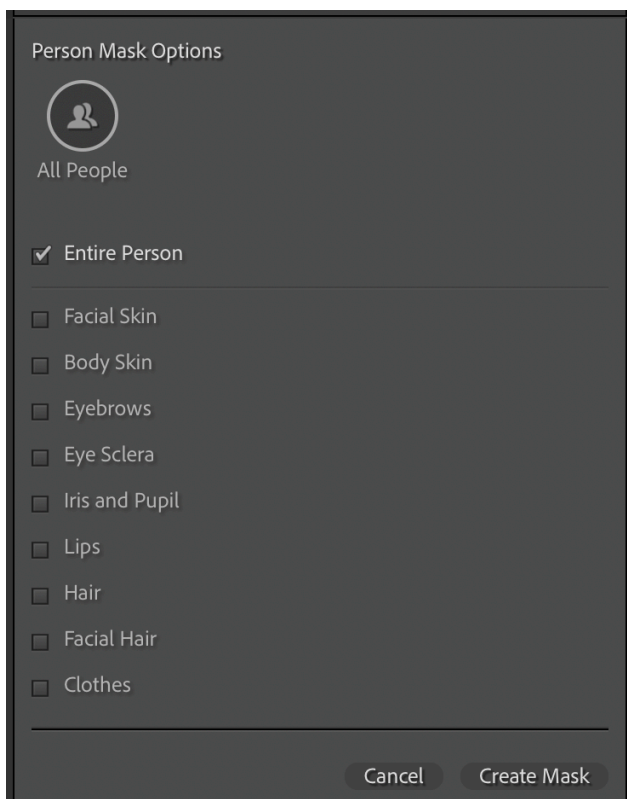
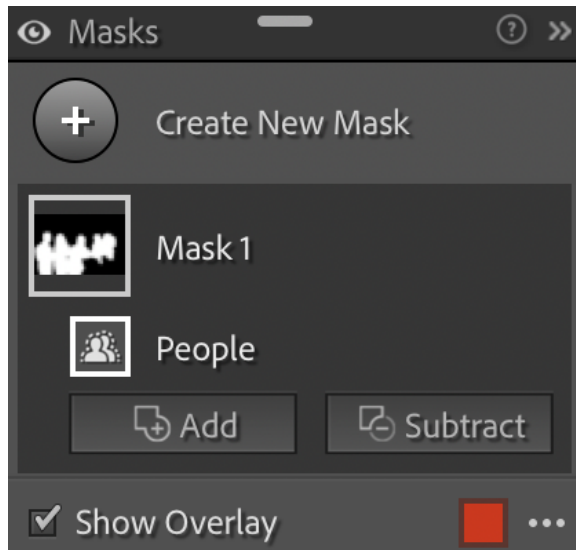
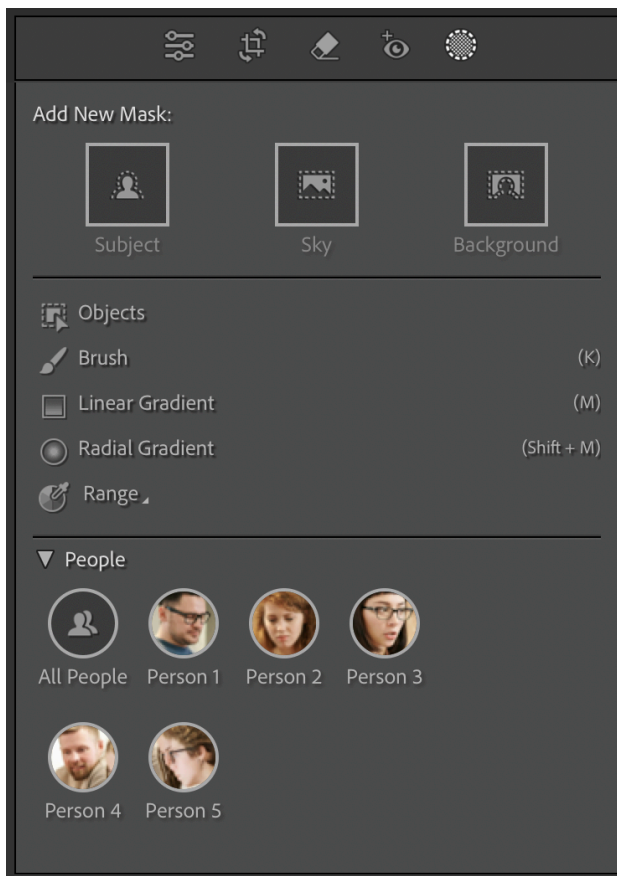
- Automatically detects and masks the primary subject in the image.
- Click on **Select Subject**.
- Lightroom will process and create a mask around the subject.

e. Select Sky-uses AI

- Automatically detects and masks the primary sky in the image.
- Click on **Select Sky**.
- Lightroom will process and create a mask around the sky.

f. Select Background-uses AI

- Automatically detects and masks the primary background in the image.
- Click on **Select Background**.
- Lightroom will process and create a mask around the background.



g. Select People-uses AI

- Automatically detects and masks people in the image.
- Click on **Select People**.
- Lightroom will process and create a mask around a person or the selected people.
 - Lightroom can also select certain aspects of people like:
 - Facial Skin
 - Body Skin
 - Eyebrows
 - Eye Sclera(whites of eyes)
 - Iris and Pupil
 - Lips
 - Hair
 - Facial Hair
 - Clothes
- You can select all people and create a full body or specific mask with options above
- Select individual people and create a

full body or specific mask with options above

- Lightroom will process and create a mask around your selections for people

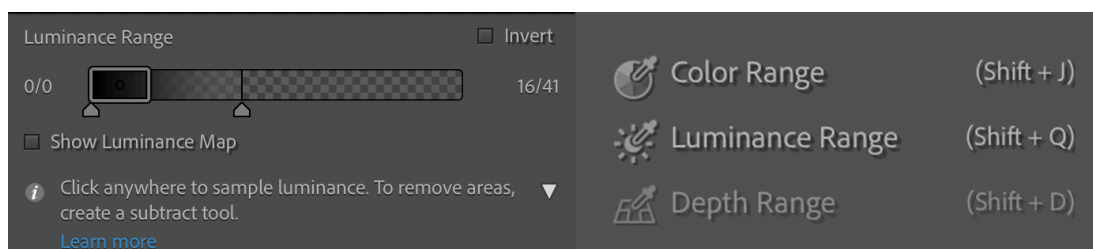
h. Select Objects-uses AI

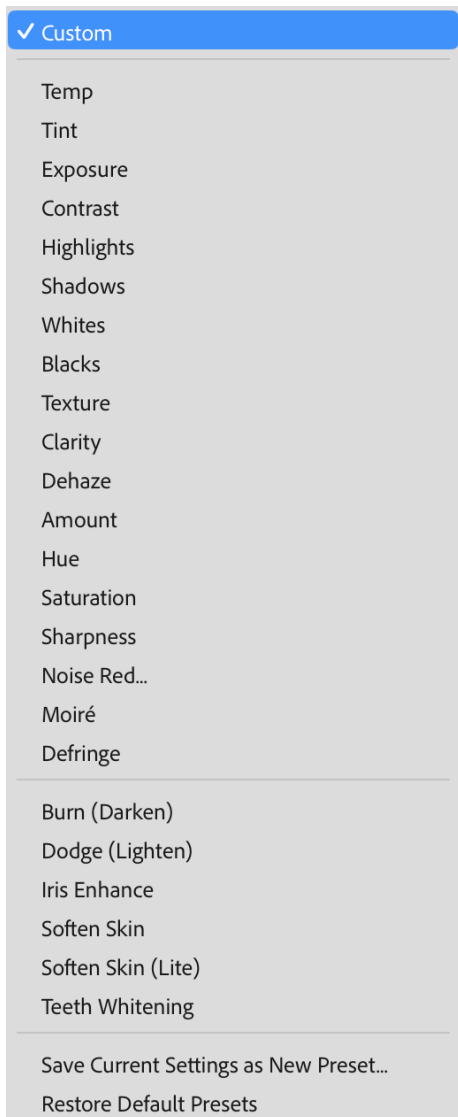


- Detects and masks objects you manually brush over in the image.
- Click on **Select Objects**.
- Paint over the object with the brush
- Lightroom will process and create a mask around the object.

i. Select Range-Luminance, Color, and Depth

- Allows you to make selections by luminance(brightness), color, and depth
- Click on the area you would like to select and Lightroom will select those values
- You can modify the area that is selected by adjusting a range selector. See below



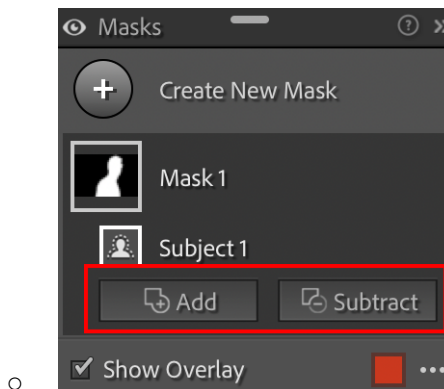


4. Fine-tune Your Mask

- After creating a mask, use the sliders in the adjustment panel to make edits.
 - **Exposure:** Adjust brightness.
 - **Contrast:** Increase or decrease contrast.
 - **Texture:** Enhance or soften textures.
 - **Clarity:** Add sharpness or softness.
 - **Color:** Adjust temperature, tint, or saturation.
- Looking at the image to the right you can also apply presets to your mask.

5. Add or Subtract from a Mask

- Click **Add** or **Subtract** in the Masking panel to refine your selection:
 - **Add:** Includes additional areas in the mask using tools like Brush or Gradients.
 - **Subtract:** Removes areas from the mask for more precise control.



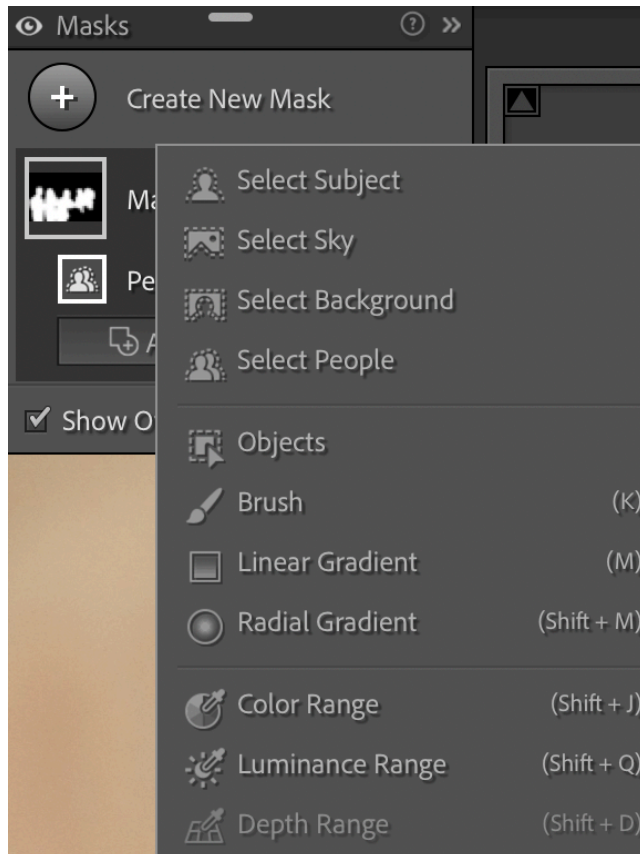
6. Use Overlays for Visual Guidance

- Toggle the mask overlay by pressing **O** on your keyboard.
- This highlights the masked area in red (or another color you set).

7. Manage Multiple Masks

- Each mask appears as a separate entry in the **Masking panel**.
 - Rename, hide, or delete masks by right-clicking on their label.
 - You can activate a mask by left-clicking on it.
-

8. Create New Mask



- Click the + called **Create New Mask**.
 - Each mask appears as a separate entry in the **Masking panel**.
 - Rename, hide, or delete masks by right-clicking on their label.
-

8. Save Your Work

- Once satisfied, click on the **Library Module** or press **G** to save your edits automatically.
 - Export the image if you need a final copy by selecting **File > Export**.
-

9. Practice & Experiment

- Experiment with combining masks

and adjusting settings for complex edits.

- Don't hesitate to reset adjustments if needed.
-